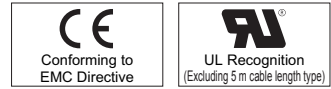
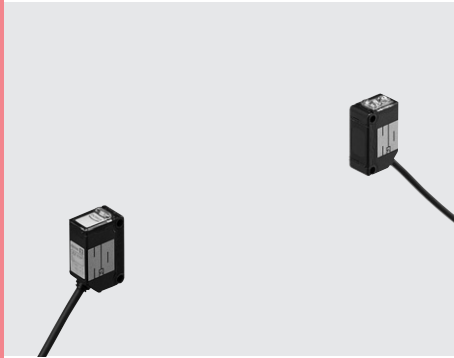



# Water Detection Sensor EZ-10 SERIES

- Related Information
- General terms and conditions.....P.1
  - Sensor selection guide.....P.11~ / P.727~
  - Glossary of terms.....P.983~
  - General precautions.....P.986~

- Never use this product as a sensing device for personnel protection.
- In case of using sensing devices for personnel protection, use products which meet laws and standards, such as OSHA, ANSI or IEC etc., for personnel protection applicable in each region or country.

SUNX website <http://www.sunx.com>

## Detects water...reliably!

### SPECIFICATIONS

The CAD data in the dimensions can be downloaded from the SUNX website: <http://www.sunx.com>

Item	Type	NPN output	PNP output
	Model No.	EZ-11	EZ-11-PN
Sensing range		5 m 16.404 ft (without container or pipe) (Note 2)	
Sensing object		ø12 mm ø0.472 mm or more liquid which contains water, or opaque object (Note 3)	
Supply voltage		12 to 24 V DC ± 10 % Ripple P-P 10 % or less	
Current consumption		Emitter: 25 mA or less, Receiver: 25 mA or less	
Output		NPN open-collector transistor <ul style="list-style-type: none"> <li>• Maximum sink current: 100 mA</li> <li>• Applied voltage: 30 V DC or less (between output and 0 V)</li> <li>• Residual voltage: 1.5 V or less (at 100 mA sink current) 0.4 V or less (at 16 mA sink current)</li> </ul>	PNP open-collector transistor <ul style="list-style-type: none"> <li>• Maximum source current: 100 mA</li> <li>• Applied voltage: 30 V DC or less (between output and +V)</li> <li>• Residual voltage: 1.5 V or less (at 100 mA source current) 0.4 V or less (at 16 mA source current)</li> </ul>
	Utilization category	DC-12 or DC-13	
	Output operation	Switchable either Light-ON or Dark-ON	
Response time		12 ms or less	
Sensitivity adjuster		Continuously variable adjuster	
Pollution degree		3 (Industrial environment)	
Protection		IP67 (IEC) (Refer to p.984 for details of standards.)	
Ambient temperature		0 to +55 °C +32 to +131 °F (No dew condensation allowed), Storage: -30 to +70 °C -22 to +158 °F	
EMC		EN 60947-5-2	
Emitting element		Infrared LED (modulated)	
Material		Polycarbonate	
Net Weight		Emitter: 45 g approx., Receiver: 50 g approx.	
Accessory		Adjusting screwdriver: 1 pc.	
Dimensions		W12 × H31 × D20 mm W0.472 × H1.221 × D0.787 in	

- Notes: 1) Where measurement conditions have not been specified precisely, the conditions used were an ambient temperature of +23 °C +73.4 °F.  
 2) The sensing range shortens depending on the thickness, material, color, etc., of the container or pipe.  
 3) If there are two slit masks on both sides, the size of those slit masks represents the min. sensing object.

### 5 m 16.404 ft cable length type and plug-in connector type

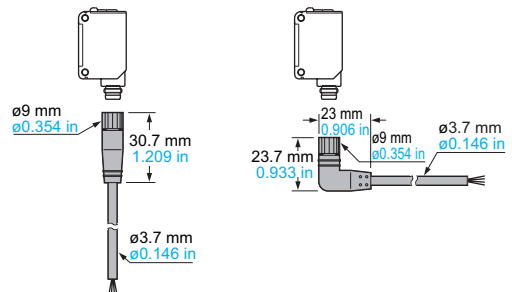
5 m 16.404 ft cable length type (standard: 2 m 6.562 ft) and plug-in connector type (standard: cable type) are also available.  
 (5 m 16.404 ft cable length type is not available for the EZ-11-PN.)  
 When ordering this type, suffix "-C5" for 5 m 16.404 ft cable length type, "-J" for plug-in connector type to the model No.  
 Please order the suitable mating cable separately for plug-in connector type.  
 (e.g.) Plug-in connector type of EZ-11-PN is "EZ-11-PN-J".

#### • Mating cable for plug-in connector type (2 cables are required)

Type	Model No.	Description
Straight	CN-24E-C2	Length: 2 m 6.562 ft
	CN-24E-C5	Length: 5 m 16.404 ft
Elbow	CN-24EL-C2	Length: 2 m 6.562 ft
	CN-24EL-C5	Length: 5 m 16.404 ft

0.2 mm<sup>2</sup> 4-core cabtyre cable with connector on one end  
 Cable outer diameter: ø3.7 mm ø0.146 in

#### • CN-24E-C2, CN-24E-C5 • CN-24EL-C2, CN-24EL-C5



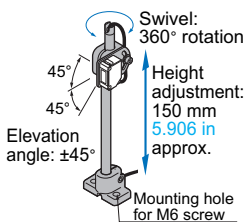
**OPTIONS**

Designation	Model No.	Description	
Round slit mask	<b>OS-CX-05</b> (Slit size $\varnothing 0.5$ mm) $\varnothing 0.020$ in	Slit on one side	• Sensing range: 200 mm <b>7.874 in</b>
		Slit on both sides	• Sensing range: 10 mm <b>0.394 in</b>
	<b>OS-CX-1</b> (Slit size $\varnothing 1$ mm) $\varnothing 0.039$ in	Slit on one side	• Sensing range: 400 mm <b>15.748 in</b>
		Slit on both sides	• Sensing range: 60 mm <b>2.362 in</b>
	<b>OS-CX-2</b> (Slit size $\varnothing 2$ mm) $\varnothing 0.079$ in	Slit on one side	• Sensing range: 1 m <b>3.281 ft</b>
		Slit on both sides	• Sensing range: 250 mm <b>9.843 in</b>
Rectangular slit mask	<b>OS-CX-05×6</b> (Slit size $0.5 \times 6$ mm) $0.020 \times 0.236$ in	Slit on one side	• Sensing range: 800 mm <b>31.496 in</b>
		Slit on both sides	• Sensing range: 250 mm <b>9.843 in</b>
	<b>OS-CX-1×6</b> (Slit size $1 \times 6$ mm) $0.039 \times 0.236$ in	Slit on one side	• Sensing range: 1.3 m <b>4.265 ft</b>
		Slit on both sides	• Sensing range: 600 mm <b>23.622 in</b>
	<b>OS-CX-2×6</b> (Slit size $2 \times 6$ mm) $0.079 \times 0.236$ in	Slit on one side	• Sensing range: 2 m <b>6.562 ft</b>
		Slit on both sides	• Sensing range: 1.3 m <b>4.265 ft</b>
Sensor mounting bracket (Note 1)	<b>MS-CX2-1</b>	Foot angled mounting bracket (Two brackets are required.)	
	<b>MS-CX2-2</b>	Foot biangled mounting bracket (Two brackets are required.)	
	<b>MS-CX2-4</b>	Protective mounting bracket (Two brackets are required.)	
	<b>MS-CX2-5</b>	Back biangled mounting bracket (Two brackets are required.)	
	<b>MS-CX-3</b>	Back angled mounting bracket (Two brackets are required.)	
Universal sensor mounting stand (Note 2)	<b>MS-AJ1</b>	Horizontal mounting type	Basic assembly
	<b>MS-AJ2</b>	Vertical mounting type	
	<b>MS-AJ1-A</b>	Horizontal mounting type	Lateral arm assembly
	<b>MS-AJ2-A</b>	Vertical mounting type	

Notes: 1) The plug-in connector type sensor does not allow use of some sensor mounting brackets because of the protrusion of the connector.  
2) Refer to the **MS-AJ** series (p.799) for details of the universal sensor mounting stand.

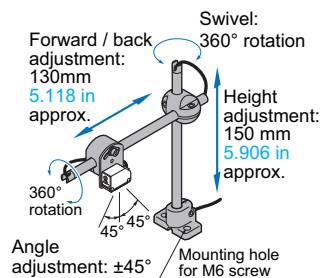
**Universal sensor mounting stand**

• **MS-AJ1**

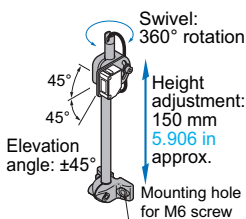


• **MS-AJ1-A**

With the lateral arm, the sensor can sense from above a production line.

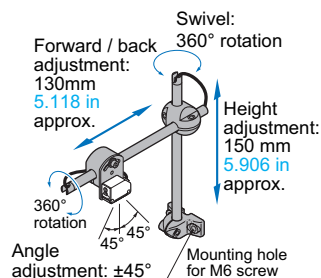


• **MS-AJ2**



• **MS-AJ2-A**

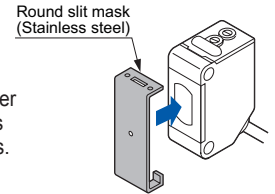
With the lateral arm, the sensor can sense from above a production line.



**Round slit mask**

• **OS-CX-□**

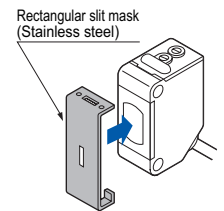
Used for narrowing the beam for cases when detecting water or other substances inside slender pipes. Fitted on the front face of the sensor with one-touch.



**Rectangular slit mask**

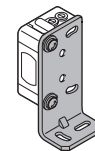
• **OS-CX-□×6**

Used for narrowing the beam for cases when detecting water or other substances inside slender pipes. Fitted on the front face of the sensor with one-touch.



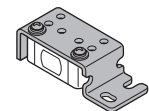
**Sensor mounting bracket**

• **MS-CX2-1**



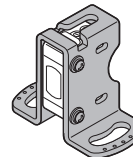
Two M3 (length 12 mm **0.472 in**) screws with washers are attached.

• **MS-CX2-2**



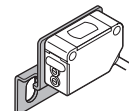
Two M3 (length 12 mm **0.472 in**) screws with washers are attached.

• **MS-CX2-4**



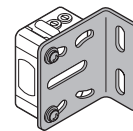
Two M3 (length 14 mm **0.551 in**) screws with washers are attached.

• **MS-CX2-5**



Two M3 (length 12 mm **0.472 in**) screws with washers are attached.

• **MS-CX-3**



Two M3 (length 12 mm **0.472 in**) screws with washers are attached.

FIBER SENSORS

LASER SENSORS

PHOTO-ELECTRIC SENSORS

MICRO PHOTO-ELECTRIC SENSORS

AREA SENSORS

SAFETY COMPONENTS

PRESSURE SENSORS

INDUCTIVE PROXIMITY SENSORS

PARTICULAR USE SENSORS

SENSOR OPTIONS

WIRE- SAVING SYSTEMS

MEASURE- MENT SENSORS

STATIC CONTROL DEVICES

LASER MARKERS

Selection Guide

Wafer Detection

**M-DW1**

**HD-T1**

Liquid Leak Detection

**EX-F70 / EX-F60**

Liquid Level Detection

**EX-F1**

Color Mark Detection

**LX-100**

**FZ-10**

Small / Slim Object Detection

**NA1-11**

Metalsheet Double-Head Detection

**GD**

Other Products