





Disconnect Switches


Main/Emergency-Off Switches Enclosed Switches – Mild Steel Enclosure

Main/Emergency-Off Switches

- Enclosed switches with mild steel enclosure (powder coated – RAL 7035)
- Cover interlock in ON position
- 3 up to 8 pole
- 20 A up to 315 A
- IP66



Switching programme	Rated data (IEC 60947)			Enclosure dimension (H × W × D) (mm)	Padlock device N-handle yellow/red	Padlock device M-handle yellow/red	Padlockable handle V-handle yellow/red
	Operat. current I _e (A)	Operational power (at 380–440 V) (kW)			 IP66	 IP66	 IP66
	AC-21A (A)	AC-23A (kW)	AC-3 (kW)		Order code number	Order code number	Order code number
41300 – 3 pole – without auxiliary contacts 	20	5.5	3.7	150 × 150 × 120	H216-41300-087N4	H216-41300-087M4	H216-41300-087V4
	20	5.5	3.7	200 × 150 × 120	H216-41300-187N4	H216-41300-187M4	H216-41300-187V4
	25	7.5	5.5	150 × 150 × 120	H220-41300-087N4	H220-41300-087M4	H220-41300-087V4
	25	7.5	5.5	200 × 150 × 120	H220-41300-187N4	H220-41300-187M4	H220-41300-187V4
	32	11	7.5	150 × 150 × 120	H226-41300-087N4	H226-41300-087M4	H226-41300-087V4
	32	11	7.5	200 × 150 × 120	H226-41300-187N4	H226-41300-187M4	H226-41300-187V4
	40	15	11	200 × 150 × 120	H233-41300-187N4	H233-41300-187M4	H233-41300-187V4
	40	15	11	200 × 150 × 120	B240-41300-087N4*	B240-41300-087M4*	B240-41300-087V4*
	50	18.5	15	200 × 150 × 120	B250-41300-087N4	B250-41300-087M4	B250-41300-087V4
	63	22	18.5	200 × 150 × 120	B263-41300-087N4	B263-41300-087M4	B263-41300-087V4
	63	22	18.5	200 × 150 × 120	H406-41300-987N4*	H406-41300-987M4*	–
	63	22	18.5	300 × 250 × 150	H406-41300-187N4	H406-41300-187M4	–
	63	22	18.5	400 × 300 × 155	H406-41300-182N4¹	H406-41300-182M4¹	–
	80	30	22	200 × 150 × 120	H408-41300-987N4	H408-41300-987M4	–
	80	30	22	300 × 250 × 150	H408-41300-187N4	H408-41300-187M4	–
	80	30	22	400 × 300 × 155	H408-41300-182N4¹	H408-41300-182M4¹	–
100	37	30	300 × 250 × 150	H410-41300-187N4	H410-41300-187M4	–	
100	37	30	400 × 300 × 155	H410-41300-182N4¹	H410-41300-182M4¹	–	
125	45	37	300 × 250 × 150	H412-41300-187N4	H412-41300-187M4	–	
125	45	37	400 × 300 × 155	H412-41300-182N4¹	H412-41300-182M4¹	–	

Rated data (IEC 60947)			Enclosure dimension (H × W × D) (mm)	Padlock device H-handle yellow/red	Order code number
Operat. current I _e (A)	Operational power (at 380–440 V) (kW)			 IP66	
160	75	45	500 × 400 × 300	K616-41300-187H4¹	
315	132	55	600 × 400 × 300	K830-41300-187H4¹	
315	132	55	800 × 400 × 300	K830-41300-287H4¹	

* larger terminal capacity, see page 154



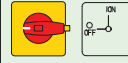
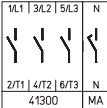
¹ hinged door


Further switching programmes from page 132.

Disconnect Switches



Main/Emergency-Off Switches Enclosed Switches – Mild Steel Enclosure

Switching programme	Rated data (IEC 60947)			Enclosure dimension (H × W × D) (mm)	Padlock device N-handle yellow/red	Padlock device M-handle yellow/red	Padlockable handle V-handle yellow/red
	Operat. current I_e (A)	Operational power (at 380–440 V) (kW)			 IP66	 IP66	 IP66
		AC-21A	AC-23A		AC-3	Order code number	Order code number
41400 – 4 pole – without auxiliary contacts – neutral contact – early make/late break 	20	5.5	3.7	150 × 150 × 120	H216-41400-087N4	H216-41400-087M4	H216-41400-087V4
	20	5.5	3.7	200 × 150 × 120	H216-41400-187N4	H216-41400-187M4	H216-41400-187V4
	25	7.5	5.5	150 × 150 × 120	H220-41400-087N4	H220-41400-087M4	H220-41400-087V4
	25	7.5	5.5	200 × 150 × 120	H220-41400-187N4	H220-41400-187M4	H220-41400-187V4
	32	11	7.5	150 × 150 × 120	H226-41400-087N4	H226-41400-087M4	H226-41400-087V4
	32	11	7.5	200 × 150 × 120	H226-41400-187N4	H226-41400-187M4	H226-41400-187V4
	40	15	11	200 × 150 × 120	H233-41400-187N4	H233-41400-187M4	H233-41400-187V4
	40	15	11	200 × 150 × 120	B240-41400-087N4*	B240-41400-087M4*	B240-41400-087V4*
	50	18.5	15	200 × 150 × 120	B250-41400-087N4	B250-41400-087M4	B250-41400-087V4
	63	22	18.5	200 × 150 × 120	B263-41400-087N4	B263-41400-087M4	B263-41400-087V4
	63	22	18.5	200 × 150 × 120	H406-41400-987N4*	H406-41400-987M4*	–
	63	22	18.5	300 × 250 × 150	H406-41400-187N4	H406-41400-187M4	–
	63	22	18.5	400 × 300 × 155	H406-41400-182N4¹	H406-41400-182M4¹	–
	80	30	22	200 × 150 × 120	H408-41400-987N4	H408-41400-987M4	–
	80	30	22	300 × 250 × 150	H408-41400-187N4	H408-41400-187M4	–
	80	30	22	400 × 300 × 155	H408-41400-182N4¹	H408-41400-182M4¹	–
100	37	30	300 × 250 × 150	H410-41400-187N4	H410-41400-187M4	–	
100	37	30	400 × 300 × 155	H410-41400-182N4¹	H410-41400-182M4¹	–	
125	45	37	300 × 250 × 150	H412-41400-187N4	H412-41400-187M4	–	
125	45	37	400 × 300 × 155	H412-41400-182N4¹	H412-41400-182M4¹	–	

Rated data (IEC 60947)			Enclosure dimension (H × W × D) (mm)	Padlock device H-handle yellow/red
Operat. current I_e (A)	Operational power (at 380–440 V) (kW)			 IP66
	AC-21A	AC-23A		AC-3
160	75	45	500 × 400 × 300	K616-41400-187H4¹
315	132	55	600 × 400 × 300	K830-41400-187H4¹
315	132	55	800 × 400 × 300	K830-41400-287H4¹



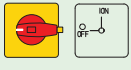
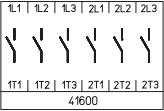
* larger terminal capacity, see page 154

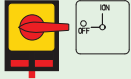
¹ hinged door

Further switching programmes from page 132.

Disconnect Switches

Main/Emergency-Off Switches Enclosed Switches – Mild Steel Enclosure

Switching programme	Rated data (IEC 60947)			Enclosure dimension (H × W × D) (mm)	Padlock device N-handle yellow/red	Padlock device M-handle yellow/red	Padlockable handle V-handle yellow/red
	Operat. current I_e	Operational power (at 380–440 V)			 IP66	 IP66	 IP66
	AC-21A (A)	AC-23A (kW)	AC-3 (kW)		Order code number	Order code number	Order code number
41600 – 6 pole – without auxiliary contacts 	20	5.5	3.7	200 × 150 × 120	H216-41600-187N4	H216-41600-187M4	H216-41600-187V4
	25	7.5	5.5	200 × 150 × 120	H220-41600-187N4	H220-41600-187M4	H220-41600-187V4
	32	11	7.5	200 × 150 × 120	H226-41600-187N4	H226-41600-187M4	H226-41600-187V4
	40	15	11	200 × 150 × 120	H233-41600-187N4	H233-41600-187M4	H233-41600-187V4
	40	15	11	300 × 250 × 150	B240-41600-187N4	B240-41600-187M4	–
	50	18.5	15	300 × 250 × 150	B250-41600-187N4	B250-41600-187M4	–
	63	22	18.5	300 × 250 × 150	B263-41600-187N4	B263-41600-187M4	–
	63	22	18.5	300 × 250 × 150	H406-41600-187N4*	H406-41600-187M4*	–
	63	22	18.5	400 × 300 × 155	H406-41600-182N4¹	H406-41600-182M4¹	–
	80	30	22	300 × 250 × 150	H408-41600-187N4	H408-41600-187M4	–
	80	30	22	400 × 300 × 155	H408-41600-182N4¹	H408-41600-182M4¹	–
	100	37	30	300 × 250 × 150	H410-41600-187N4	H410-41600-187M4	–
	100	37	30	400 × 300 × 155	H410-41600-182N4¹	H410-41600-182M4¹	–
	125	45	37	300 × 250 × 150	H412-41600-187N4	H412-41600-187M4	–
	125	45	37	400 × 300 × 155	H412-41600-182N4¹	H412-41600-182M4¹	–

Rated data (IEC 60947)			Enclosure dimension (H × W × D) (mm)	Padlock device H-handle yellow/red
Operat. current I_e	Operational power (at 380–440 V)			 IP66
AC-21A (A)	AC-23A (kW)	AC-3 (kW)		Order code number
160	75	45	500 × 400 × 300	K616-41600-187H4¹
315	132	55	600 × 400 × 300	K830-41600-187H4¹
315	132	55	800 × 400 × 300	K830-41600-287H4¹

* larger terminal capacity, see page 154


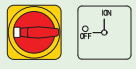
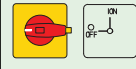
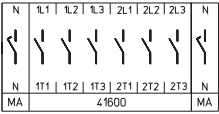
¹ hinged door

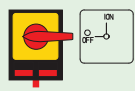
Further switching programmes from page 132.

Disconnect Switches



Main/Emergency-Off Switches Enclosed Switches – Mild Steel Enclosure

Switching programme	Rated data (IEC 60947)			Enclosure dimension (H × W × D) (mm)	Padlock device N-handle yellow/red	Padlock device M-handle yellow/red	Padlockable handle V-handle yellow/red
	Operat. current I _e	Operational power (at 380–440 V)			 IP66	 IP66	 IP66
	AC-21A (A)	AC-23A (kW)	AC-3 (kW)		Order code number	Order code number	Order code number
41800 – 8 pole – without auxiliary contacts – 2 neutral contacts – early make/late break 	20	5.5	3.7	200 × 150 × 120	H216-41800-187N4	H216-41800-187M4	H216-41800-187V4
	25	7.5	5.5	200 × 150 × 120	H220-41800-187N4	H220-41800-187M4	H220-41800-187V4
	32	11	7.5	200 × 150 × 120	H226-41800-187N4	H226-41800-187M4	H226-41800-187V4
	40	15	11	200 × 150 × 120	H233-41800-187N4	H233-41800-187M4	H233-41800-187V4
	40	15	11	300 × 250 × 150	B240-41800-187N4	B240-41800-187M4	–
	50	18.5	15	300 × 250 × 150	B250-41800-187N4	B250-41800-187M4	–
	63	22	18.5	300 × 250 × 150	B263-41800-187N4	B263-41800-187M4	–
	63	22	18.5	300 × 250 × 150	H406-41800-187N4*	H406-41800-187M4*	–
	63	22	18.5	400 × 300 × 155	H406-41800-182N4¹	H406-41800-182M4¹	–
	80	30	22	300 × 250 × 150	H408-41800-187N4	H408-41800-187M4	–
	80	30	22	400 × 300 × 155	H408-41800-182N4¹	H408-41800-182M4¹	–
	100	37	30	300 × 250 × 150	H410-41800-187N4	H410-41800-187M4	–
	100	37	30	400 × 300 × 155	H410-41800-182N4¹	H410-41800-182M4¹	–
	125	45	37	300 × 250 × 150	H412-41800-187N4	H412-41800-187M4	–
	125	45	37	400 × 300 × 155	H412-41800-182N4¹	H412-41800-182M4¹	–

Rated data (IEC 60947)			Enclosure dimension (H × W × D) (mm)	Padlock device H-handle yellow/red
Operat. current I _e	Operational power (at 380–440 V)			 IP66
AC-21A (A)	AC-23A (kW)	AC-3 (kW)		Order code number
160	75	45	500 × 400 × 300	K616-41800-187H4¹
315	132	55	600 × 400 × 300	K830-41800-187H4¹
315	132	55	800 × 400 × 300	K830-41800-287H4¹

* larger terminal capacity, see page 154

¹ hinged door

Further switching programmes from page 132.

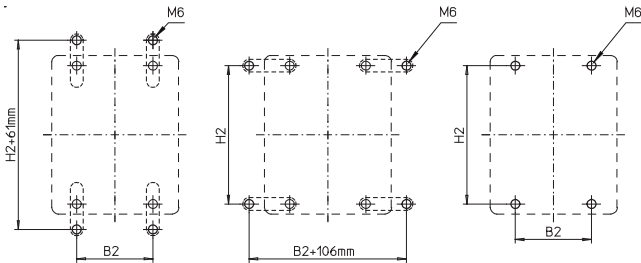
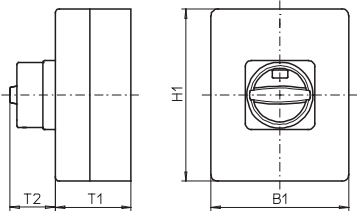
Disconnect Switches

Main/Emergency-Off Switches Enclosed Switches – Mild Steel Enclosure

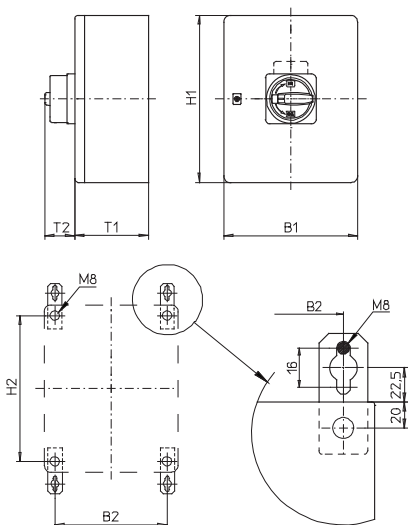
Dimensions in mm:

Setup of order code number

Type	Switching progr.	Mtg. form
H216	41400	087M4
Order code no.	H216-41400-087M4	



Please order mounting brackets separately, see page 148.



Please order mounting brackets separately, see page 148.

Mild steel enclosures **150 × 150 × 120 mm / 200 × 150 × 120 mm / 300 × 250 × 150 mm:**

Types H216 / H220 / H226 / H233:

Mtg. form	H1	B1	T1	T2	H2	B2
087M4	150	150	120	38	132	85
087N4	150	150	120	33	132	85
087V4	150	150	120	39	132	85
187M4	200	150	120	38	182	85
187N4	200	150	120	33	182	85
187V4	200	150	120	39	182	85

Types B240 / B250 / B263:

Mtg. form	H1	B1	T1	T2	H2	B2
087M4	200	150	120	38	182	85
087N4	200	150	120	33	182	85
087V4	200	150	120	39	182	85
187M4	300	250	150	50	282	185
187N4	300	250	150	45	282	185

Types H406 / H408 / H410 / H412:

Mtg. form	H1	B1	T1	T2	H2	B2
187M4	300	250	150	50	282	185
187N4	300	250	150	45	282	185
987M4	200	150	120	50	182	85
987N4	200	150	120	45	182	85

Mild steel enclosures **400 × 300 × 155 mm:**

Types H406 / H408 / H410 / H412:

Mtg. form	H1	B1	T1	T2	H2	B2
182M4	400	300	155	50	360	260
182N4	400	300	155	45	360	260

Gland plate at the bottom

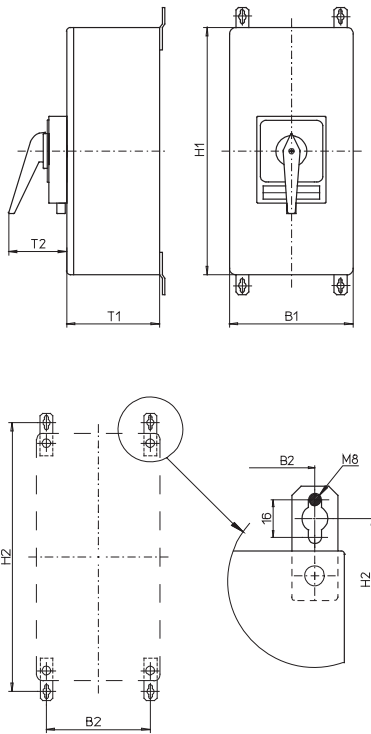
Disconnect Switches

Main/Emergency-Off Switches Enclosed Switches – Mild Steel Enclosure

Dimensions in mm:

Setup of order code number

Type	Switching progr.	Mtg. form
K616	41300	187H4
Order code no.	K616-41300-187H4	



Mounting brackets are included.

Mild steel enclosures **500 × 400 × 300 mm / 600 × 400 × 300 mm / 800 × 400 × 300 mm:**

Type K616:

Mtg. form	H1	B1	T1	T2	H2	B2
187H4	500	400	300	83	545	360

Type K830:

Mtg. form	H1	B1	T1	T2	H2	B2
187H4	600	400	300	93	645	360
287H4	800	400	300	93	845	360

Further switching programmes and corresponding dimensions for types K on request.

Gland plate at the bottom