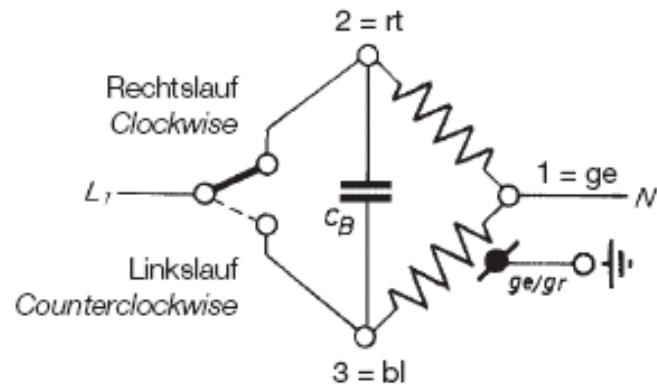


## Connection diagram for ASTRO – synchronous motor ASM

### Flying leads construction



### Terminal box construction (1-phase)

1-2 = Clockwise/ge-rt

1-3 = Counterclockwise/ge-bl



### Terminal box construction (3-phase)

1 = Phase L1 - ge

2 = Phase L2 - rt

3 = Phase L3 - bl

In order to be able to turn around  
the direction of rotation = 1 and 2 exchanges

